

Easy Installation, Seamless Integration

Neptune® E-CODER®)R900i™



The Neptune® E-CODER®)R900i™ is designed as an all-in-one package – pairing absolute encoder technology with the reliable connectivity of any Neptune R900® System endpoint. The E-CODER register provides an easy-to-read LCD display combined with flexible AMR/AMI connectivity and is compatible with any Neptune mechanical meter. Integrated endpoints eliminate the hassle of wiring while delivering reliable and accurate data to optimize system performance, improve customer service, and support water conservation initiatives.

- Eliminate the hassle of endpoint programming and wiring
- Flexible meter reading options with AMR/AMI capabilities
 - R900 (AMR/AMI)
 - LoRaWAN® (AMI)
 - Cellular (AMI)
- Peace of mind with access to 96 days of historical consumption data
- Prevent tampering and environmental damage with no external wires
- Improve service quality and billing accuracy with detailed consumption data
- Reduce inventory with an all-in-one register and endpoint package
- Pinpoint trouble areas quickly with flags that identify leaks, reverse flow, and tampering
- Streamline testing and onsite troubleshooting with on-screen flow rate and flags



NEPTUNE
TECHNOLOGY GROUP

#winyourday

Endpoint Specifications

Electrical Specifications

- Endpoint power: Lithium battery with capacitor

Transmitter Specifications:

- Two-way endpoint
- Meter Reading & Flag Interval:
 - Every 15 minutes
 - Leak, Backflow, Tamper
- Data Logging Interval:
 - 96 days of hourly data

Environmental Conditions

- Operating Temperature: -22°F to +149°F (-30°C to +65°C)
- Storage Temperature: -40°F to +158°F (-40°C to +70°C)
- Operating Humidity: 100% condensing, fully submersible (Pit Set version only)

Materials

- Register Housing:
 - Engineer polymer
 - Roll-sealed copper (Pit Set version only)
- Lens: Tempered Glass

Options

Compatibility

- Available for every size Neptune mechanical meter
- Handhelds/mobile devices with belt clip transceiver – mobile RF
- Mobile data collector RF
- R900® gateway – fixed network RF
- LoRaWAN gateway – fixed network RF

Resolution & Capacity

High Resolution (8-digit reading)

	Size	G	ft ³	m ³
T-10 (Includes disc side of TRU/FLO)	5/8", 3/4", 1"	0.1	0.01	0.001
T-10 (Includes disc side of HPPIII)	1 1/2", 2"	1	0.1	0.01
HP Turbine (Includes FS Turbine, HPPIII, Turbine Side of TRU/FLO)	1 1/2", 2", 3", 4"	1	0.1	0.01
HP Turbine (Includes FS Turbine, HPPIII, Turbine Side of TRU/FLO)	6", 8", 10"	10	1	0.1

Register Capacity

	Size	G	ft ³	m ³
T-10®(Includes disc side of TRU/FLO®)	5/8", 3/4", 1"	10,000,000	1,000,000	100,000
T-10 (Includes disc side of HPPIII)	1 1/2", 2"	100,000,000	10,000,000	1,000,000
HP Turbine (Includes FS Turbine, HPPIII, Turbine Side of TRU/FLO)	1 1/2", 2", 3", 4"	100,000,000	10,000,000	1,000,000
HP Turbine (Includes FS Turbine, HPPIII, Turbine Side of TRU/FLO)	6", 8", 10"	1,000,000,000	100,000,000	10,000,000

Units of Measure

- U.S. Gallons, Cubic Feet, Imperial Gallons, Cubic Metres

Antennas

- Internal antenna (not available on LoRaWAN or cellular)
- Optional through-the-lid antenna
- 18" coax
- 6' coax
- 20' coax

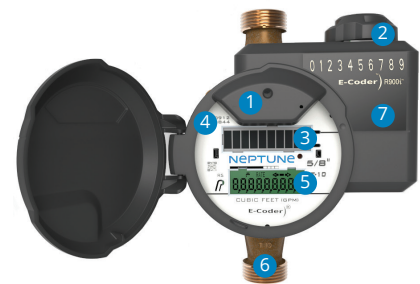
Warranty

- Neptune provides a limited warranty for performance, materials, and workmanship. See warranty statement for details.

LCD Display

- 9-digit display for extra resolution on manual reads.

- Internal Antenna
- External Antenna Port
- Solar Panel
- Date of Manufacture
- LCD Display
- T-10® Meter
- R900® Endpoint Integrated



FLOW INDICATOR Shows the direction of flow through the meter: ON Water in use. OFF Water not in use. Flashing Water is running slowly. (-) Reverse flow. (+) Forward flow.	
LEAK INDICATOR Displays a possible leak: OFF No leak indicated. Flashing Intermittent leak indicates that water has been used for at least 50 of the 96 15-minute intervals during a 24-hour period. On Continuously Indicates water use for all 96 15-minute intervals during a 24-hour period.	
RATE OF FLOW Average flow rate is displayed every twelve seconds on LCD display.	RATE
LCD DISPLAY Nine-digit LCD displays the meter reading in billing units of measure: U.S. gallons, cubic feet, Imperial gallons, or cubic metres.	



neptunetg.com
#winyourday

Neptune Technology Group
1600 Alabama Highway 229
Talladega, AL 36078
800-633-8754 f 334-283-7293